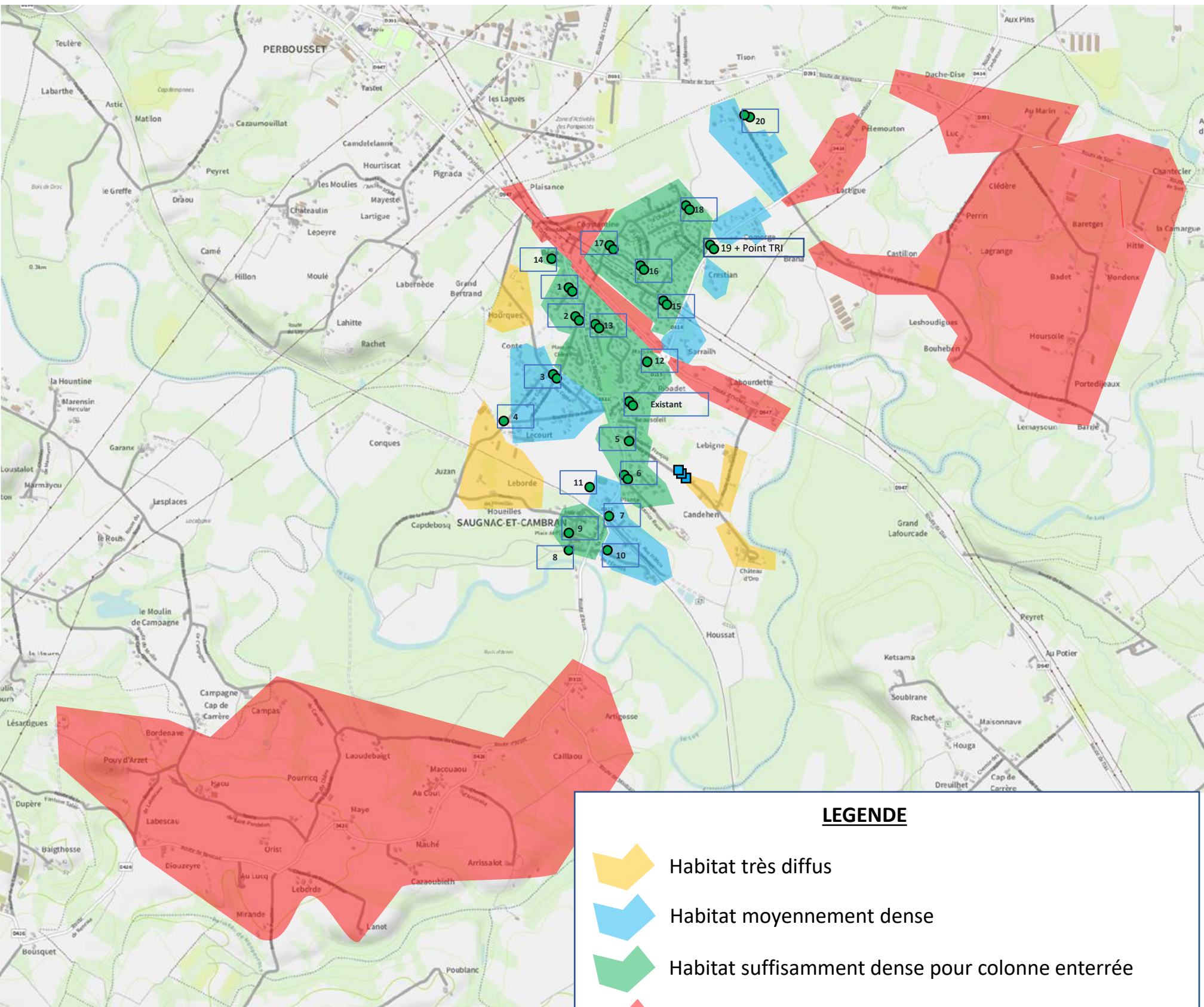









Saugnac et cambran

- 32 colonnes aériennes à installer
- 3 colonnes semi-enterrées existantes



LEGENDE

-  Habitat très diffus
-  Habitat moyennement dense
-  Habitat suffisamment dense pour colonne enterrée
-  Habitat incompatible pour collecte en colonne → Passage d'une BOM avec bacs individuels en C1
-  Proposition colonne aérienne
-  Colonne semi-enterrée existante
-  Colonne aérienne existante